

EJL1TL30

EPB & James Hardie Linea™ Weatherboard

Two Way FRR

External Wall - Timber Frame

Load Bearing

System Number	Lining Suffix	FRR	Insulation	Noise Control STC	Lining Requirement
EJL1TL30	-F10	30/30/30	R2.2 glass wool	46	1 x 10mm EPB FireSmart on Internal side James Hardie Linea™ Weatherboard to External side

Framing, Wall Height, Load and Framing Dimension

Timber framing to comply with relevant sections and clauses of NZBC B1: Structure and NZBC B2: Durability. Timber framing must be in accordance with NZS3604 stud tables for load bearing or non-load bearing partitions. Furthermore;

- Minimum framing dimension is 90 x 45mm.
- Nogs must be in place at a maximum of 800mm centres.
- Maximum stud spacing's are 600mm centres.
- The fire rated walls built close to boundary are also required to achieve post fire stability in either direction in accordance with the NZBC verification method B1/VM1, paragraph 2.2.4

Refer to latest James Hardie Fire & Acoustic Design Manual figures and tables for further detail.

Underlay

For the type of allowable underlay refer to table below.

	EH Wind Zone	Other Wind Zone
Buildings <10m	RAB	Flexible Underlay
Buildings >10m	RAB	RAB

Fire Retardant Flexible Underlay

Install any Fire Retardant Flexible Underlay beneath the claddings, that complies with Table 23 of E2/AS1 and has a flammability index not exceeding 5.

RAB™ Board

One layer of James Hardie RAB™ Board fixed to entire framing.

6mm RAB™ Board : Use 40 x 2.8mm fibre cement nail at 200mm centres

9mm RAB™ Board : Use 50 x 2.8mm fibre cement nail at 200mm centres

Fixing to be 12mm from sheet edges

Reference to be made to the James Hardie Home RAB™ Pre-Cladding & RAB™ Board Installation Manual.

Cavity Batten

When Cavity Batten is required, use a nominal 20mm Timber Cavity Batten. Refer to Linea™ Weatherboard Cavity Fix Technical Specification for installation instructions. When Cladding can be directly fixed without a cavity batten then a fire retardant flexible underlay must be used (if allowable). Refer to Linea™ Weatherboard Direct Fix Technical Specification.

Linea™ Weatherboard Cladding

James Hardie Linea™ Weatherboard cladding to external side of the timber framing. Consider the nail length required depending on the type of fixing i.e. Cavity fixing or Direct fixing. Refer to both Linea™ Weatherboard Cavity Fix Technical Specification and Linea™ Weatherboard Direct Fix Technical Specification AND the James Hardie Fire & Acoustic Design Manual for information regarding fixing and finishing.

Wall Insulation

Insulation must be installed between studs and nogs. Use 90mm thick R2.2 glass wool insulation.

EPB Plasterboard Lining

NB: The installer must look for the Product Identification Code on the face paper to ensure the correct board type is installed. Refer to the Face Paper Product Identification Code table on this page.

One layer of 10mm EPB FireSmart lining to internal side of framing. Vertical fixing only permitted. Use full height sheets where possible when fixing vertical. All sheet joints must be fixed over solid timber framing. Sheets shall be touch fitted.

Fixing of EPB Plasterboard Internal Linings

Fasteners

41mm x 6g High Thread Drywall Screws

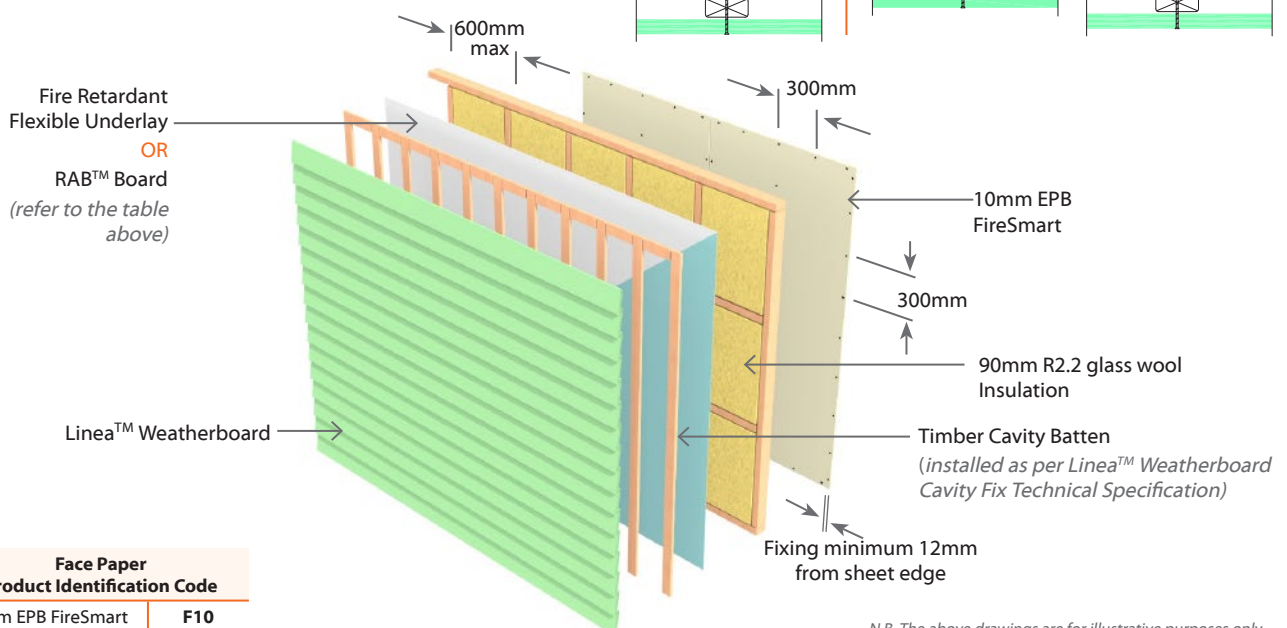
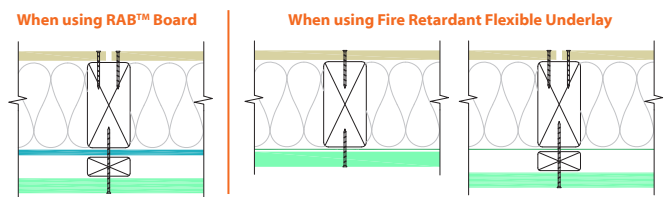
Fastener Centres

Fix at 300mm centres around sheet perimeter and up all intermediate studs. Place fasteners 50mm from sheet corners along the top and bottom plates. On end studs place additional fasteners 50-60mm vertically and no close than 10mm from plate to stud connections.

Place fasteners no closer than 12mm from the sheet edges and 18mm from sheet ends. Place fasteners at 200mm centres where sheet end butt joints occur.

Jointing and Finishing of EPB Plasterboard

All fastener heads stopped and all sheet joints reinforced with paper jointing tape and stopped. All in accordance with Elephant Plasterboard Installation Guide.



Face Paper Product Identification Code
10mm EPB FireSmart F10

N.B. The above drawings are for illustrative purposes only.

