

**E2SSa30**

**Staggered Steel Frame**

Non Load Bearing

Two Way FRR

2 Layers: 1 Layer of Plasterboard to each side of frame

Sub Intertency acoustic

System Number	Lining Suffix	FRR	Load Bearing Ability	Noise Control		Lining Requirement
				STC	Rw	
E2SSa30	-S26	-/30/30	NLB	50	49	1 x 13mm EPB Standard each side
	-M20	-/30/30	NLB	49	48	1 x 10mm EPB MultiSmart each side

**Framing**

**Staggered Steel Frame** – Tracks to be a minimum size of 92mm x 30mm x 0.55 BMT and are fixed to floor and ceiling. Steel studs with minimum dimensions 64 x 34mm x 0.55 BMT with 6mm return. Stud to be fixed to the tracks using Staggered Stud Clip and placed at 600mm centres with a 15mm expansion gap at top of frame. No other fixings to track are allowed. Studs to be offset 300mm centres.

**Wall Heights**

Recommended maximum height is 2.4m. Higher walls may be subject to specific engineering design or consult the framing manufacturer.

**Partition Width**

In order to achieve the STC ratings in the table above the partition width (excluding the board) shall be a minimum of 92mm.

Track Depth	Lining Suffix	Plasterboard	Total Partition
92mm	M20	20mm	112mm
	S26	26mm	118mm

**Wall Sound Absorber**

Install Sound Absorber between studs of the frame. Use 75mm thick R1.8 glass wool blanket. Split 600mm wide blankets into 300mm.

**Plasterboard Lining**

**NB:** The installer must look for the Product Identification Code on the face paper to ensure the correct board type is installed. Refer to the Face Paper Product Identification Code table on this page.

One layer of EPB Plasterboard lining to each side of Staggered Steel frame as per specified system above.

Vertical fixing only permitted. Use full height sheets where possible. All sheet joints must be fixed over steel framing.

Sheet end butt joints must be formed over nogs. Sheets are fixed hard to the floor. Sheets shall be touch fitted.

**Fixing of Linings (Non Fire Rated)**

Fix the linings as per the EPB Plasterboard Installation Guide. If an FRR is required then follow the Fixing of Linings instruction in the following paragraph.

**Fixing of Linings (to achieve Fire Rating)**

**Fasteners (As per Specified System Above)**

System Number	Side One	Side Two
	Single Layer	Single Layer
Self-Tapping Drywall Screws		
E2SSa30-M20	10mm	10mm
	25 x 6g	25 x 6g
E2SSa30-S26	13mm	13mm
	25 x 6g	25 x 6g

**Fastener Centres**

Fix at 300mm centres up each stud with no fixing to top and bottom tracks.

Place fasteners no closer than 12mm to the sheet edge and 50mm from sheet ends.

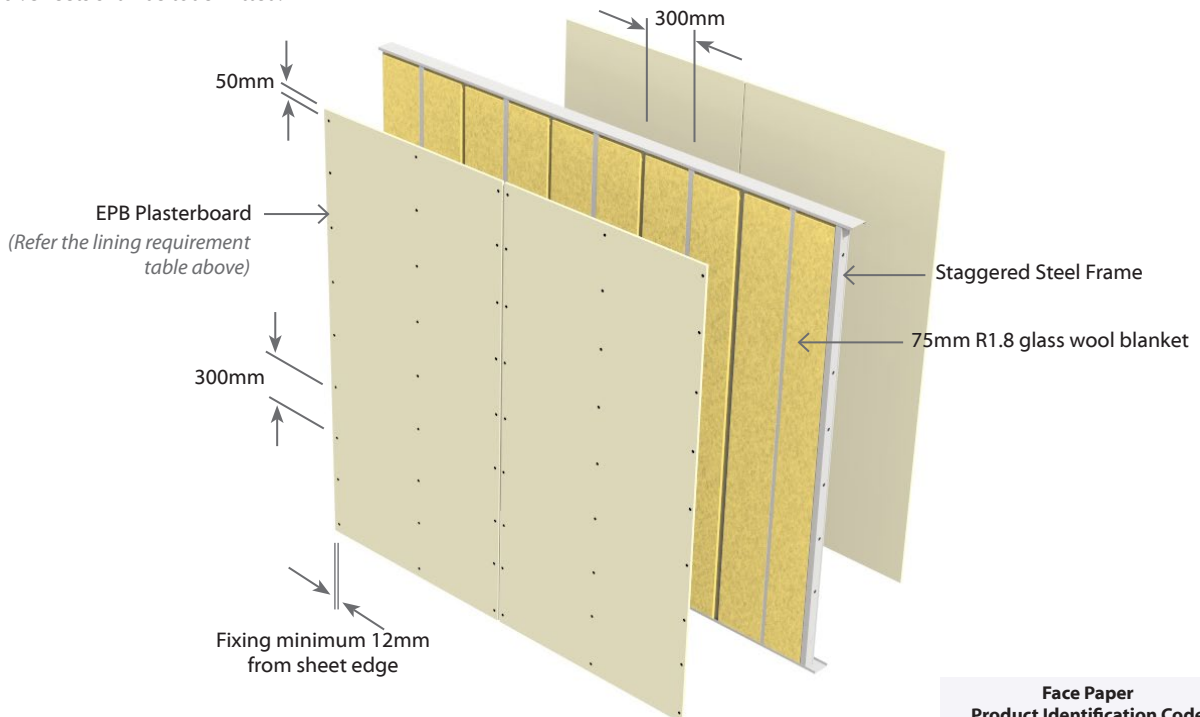
Place fasteners at 200mm centres where sheet end butt joints occur.

**Acoustic Sealant**

A bead of acoustic sealant must be placed on the perimeter of the framing. The single or outer layer is then bedded onto the bead. The perimeter junctions of the wall must be airtight.

**Jointing**

All fastener heads stopped and all sheet joints reinforced with paper jointing tape and stopped. Wall to ceiling junctions are to be reinforced with paper tape and square stopped or finished with Cornice. All in accordance with EPB Plasterboard Installation Guide.



Face Paper Product Identification Code	
13mm EPB Standard	<b>S13</b>
10mm EPB MultiSmart	<b>M10</b>

