

EBV1TL30 Single Timber Frame with Brick Veneer Load Bearing | Two Way FRR

1 Layer: 1 Layer of Plasterboard to one side of frame & Brick Veneer to the other side of the frame

System Number	Lining Suffix	Fire Rating	Load Bearing Ability	Noise Control		Lining Requirement
				STC	Rw	
EBV1TL30	-F10	30/30/30	LB	46	45	1 x 10mm EPB FireSmart® on One side Brick Veneer to Other side
EBV1TL30	-S13	30/30/30	LB	46	45	1 x 13mm EPB® Standard on One side Brick Veneer to Other side

Framing

Framing to comply with relevant sections and clauses of NZBC B1: Structure and NZBC B2: Durability.
Studs at 600mm centres maximum.
Nogs at 1200mm centre maximum.

Wall Height, Load and Framing Dimensions

These are determined by NZS3604 stud tables for load bearing or non-load bearing partitions.
Minimum stud dimension 90 x 35mm
Maximum stud height not exceeding 3.0m.
For higher stud heights consult brick manufacturers.

Brick Veneer

Brick veneer must comply to AS/NZS 4456 and AS/NZS 4455 with minimum thickness of 70mm. Brick Manufacturer must demonstrate minimum 60 minutes fire resistance.
Brick veneer cladding installed as per manufacturer's technical specification and relevant NZ Standards.

Cavity Insulation

Fill wall cavity between studs and nogs with 1 layer of 90mm thick R2.2 glass wool insulation.

Plasterboard Lining

NB: The installer must look for the Product Identification Code on the face paper to ensure the correct board type is installed. Refer to the Face Paper Product Identification Code table on this page.

One layer of EPB® Plasterboard lining as per specified system above on one side of the timber framing.

Vertical or Horizontal fixing permitted. Use full height or full length sheets where possible.

Sheet end butt joints- must be formed over framing. All sheet joints must be fixed over solid timber framing. Sheets shall be touch fitted.

Fixing of Linings

Fasteners (As per Specified System Above)

System Number	Single Layer
	High Thread Drywall Screws
EBV1TL30-F10	10mm
	41 x 6g
EBV1TL30-S13	13mm
	41 x 6g

Fastener Centres

Fix at 300mm centres at sheet perimeters, on top and bottom plates and 300mm centres up all studs.

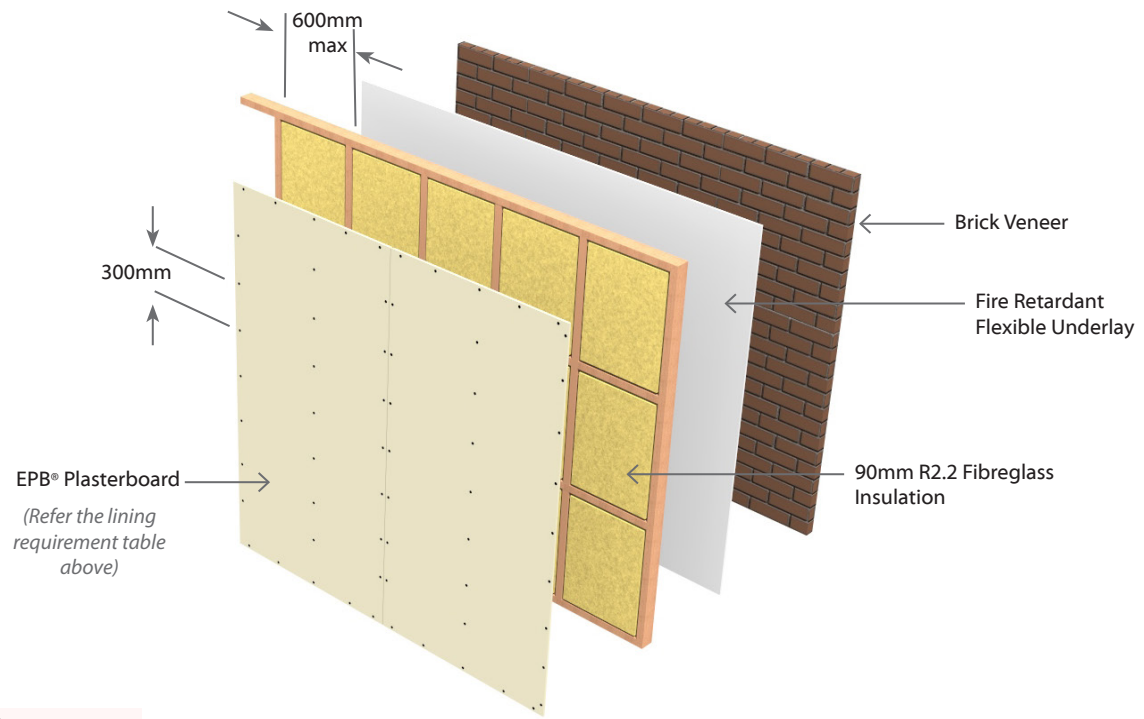
Place fasteners no closer than 12mm from the sheet edges and 18mm from sheet ends.

Place fasteners 50mm from sheet corners along the top and bottom plates. On end studs place additional fasteners 50-60mm vertically and no close than 10mm from plate to stud connections.

Place fasteners at 200mm centres where sheet end butt joints occur.

Jointing

All fastener heads stopped and all sheet joints reinforced with paper jointing tape and stopped. All in accordance with EPB® Plasterboard Installation Guide.



Face Paper Product Identification Code	
13mm EPB® Standard	S13
10mm EPB FireSmart®	F10

